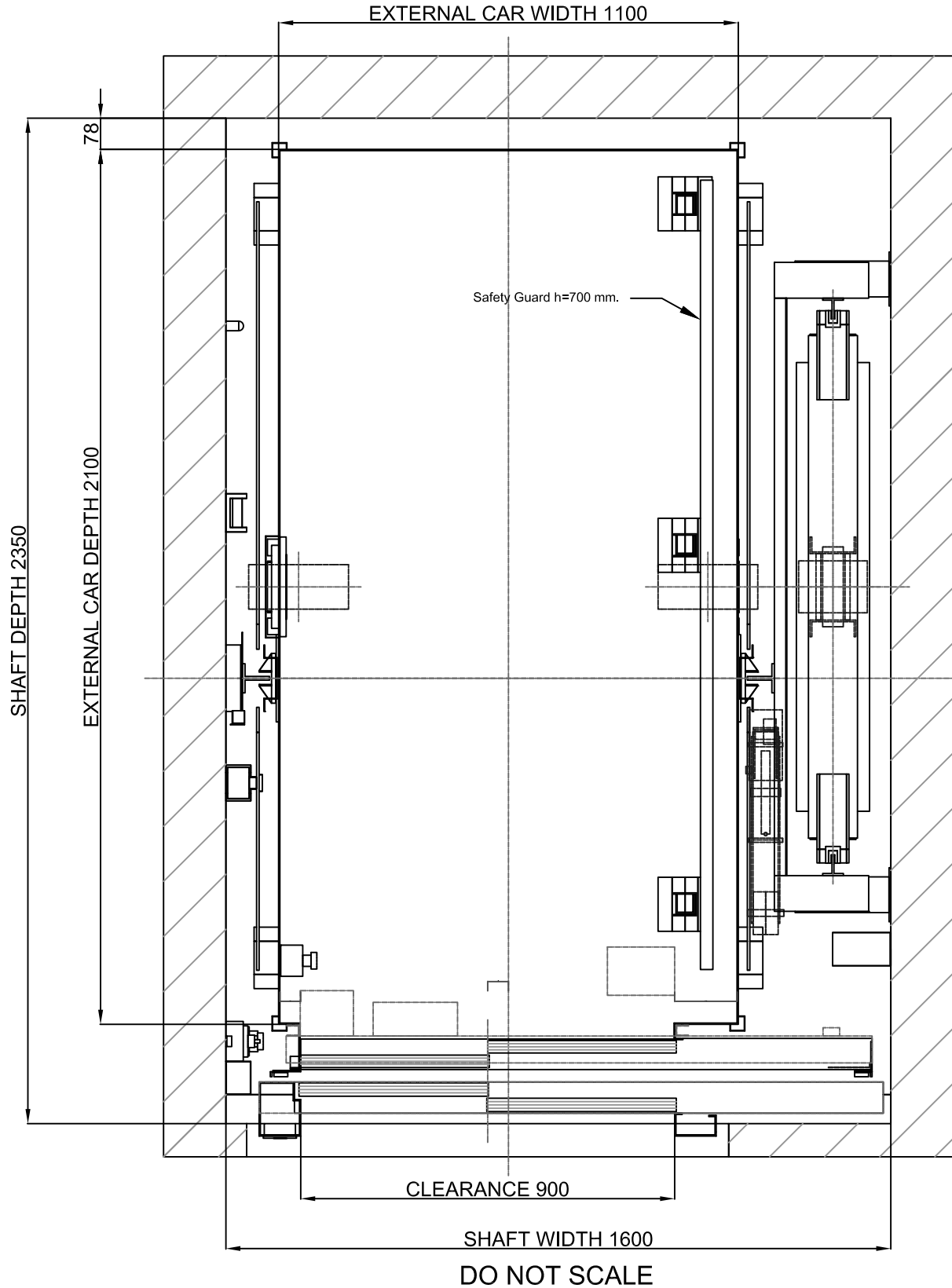
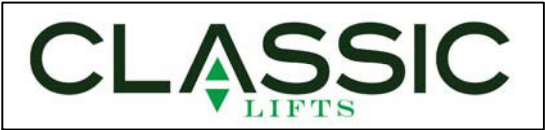
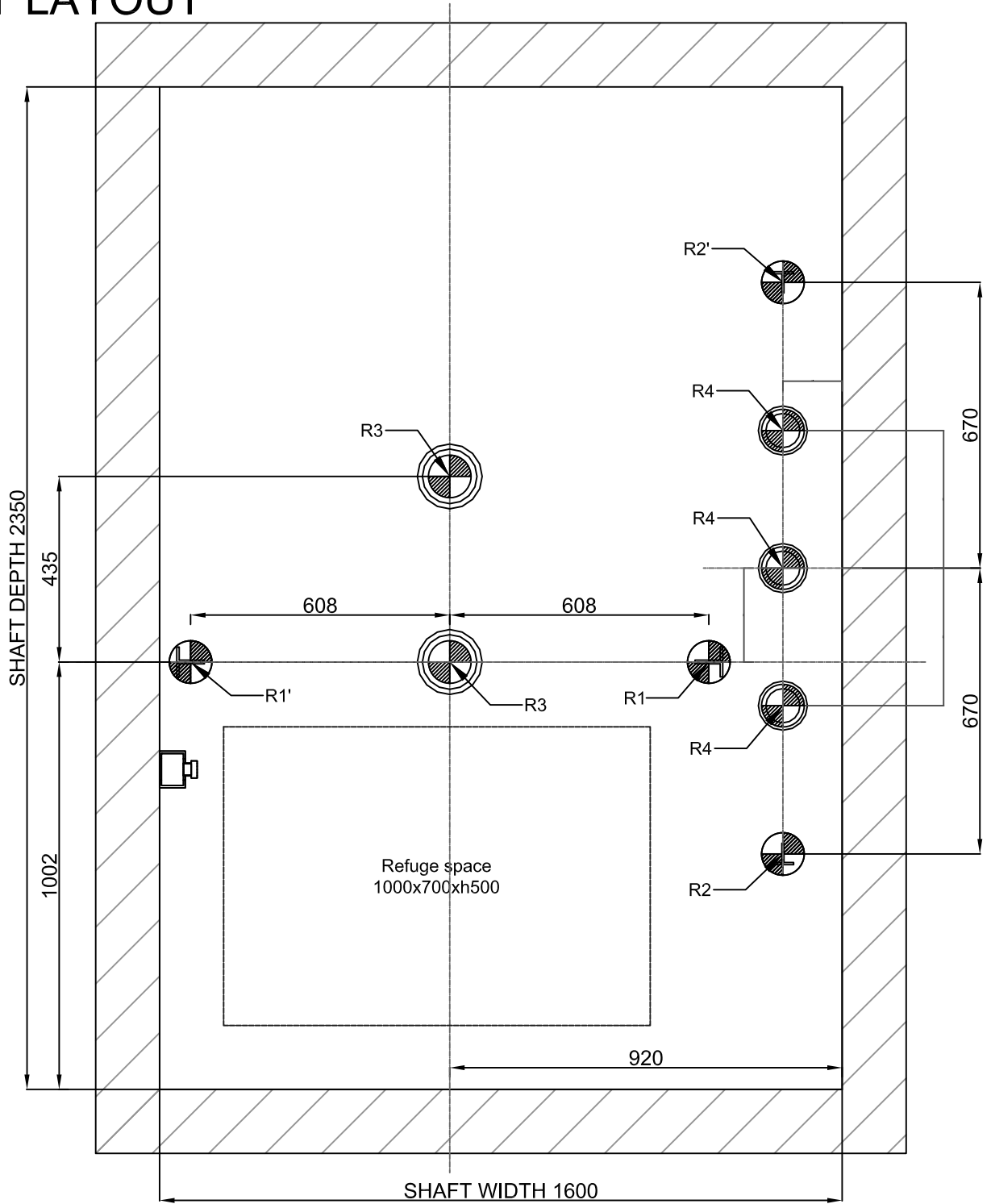


01-PLAN VIEW

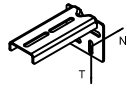



DRAWING	DATE	REV.	SHEET	[!] Unbounded dimensions in drawings are indicative and not binding.
		00	1	REFERENCE: DO NOT SCALE MPGO!EVOLUTION630ST2_EN
MODEL LIFT:				CLIENT: WORK SITUATION:
CLASSIC LIFTS - EVOLUTION				
CAPACITY: [N° PERSONS]	13			
NOMINAL LOAD: [kg]	1000			
SPEED: [m/s]	1			
FREQUENCY: [Hz]	50			
TENSION: [V]	400V [Three-phase]			

05-PIT LAYOUT

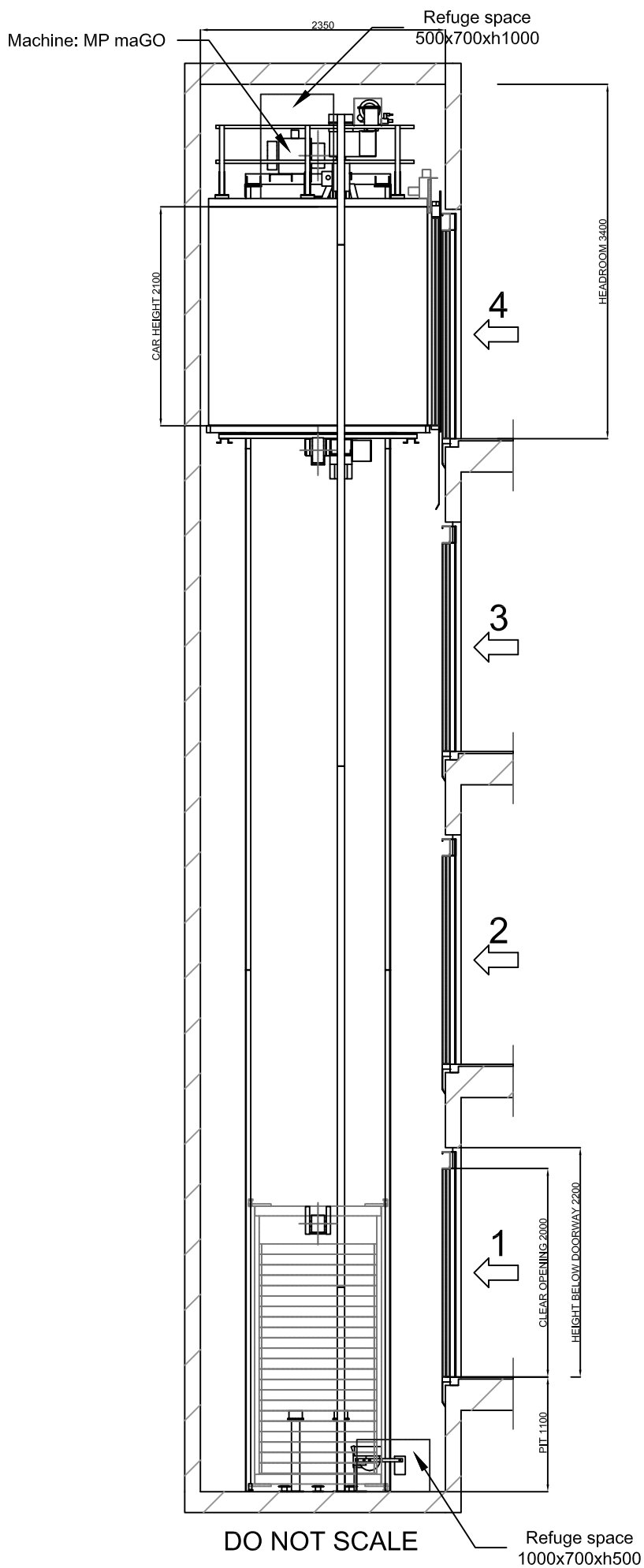


REACTIONS [N] [max.]			
R1	23000	R2	22000
R1'	23000	R2'	23000
R3	38000	R4	18800
N	2700	T	1000



DRAWING	DATE	REV.	SHEET	[*] Unbounded dimensions in drawings are indicative and not binding.
		00	1	REFERENCE: DO NOT SCALE MPGO!EVOLUTION630ST2_EN
MODEL LIFT:				CLIENT: WORK SITUATION:
CLASSIC LIFTS - EVOLUTION				
CAPACITY: [N° PERSONS]		13		
NOMINAL LOAD: [kg]		1000		
SPEED: [m/s]		1		
FREQUENCY: [Hz]		50		
TENSION: [V]		400V [Three-phase]		

02-SIDE VERTICAL SECTION



[*] Unbounded dimensions in drawings are indicative and not binding.

REFERENCE:

MPGO!EVOLUTION630ST2_EN

CLIENT:

WORK SITUATION:

CLASSIC
LIFTS

DRAWING	DATE	REV.	SHEET
		00	2
MODEL LIFT:			
CLASSIC LIFTS - EVOLUTION			
CAPACITY: [N° PERSONS]	13		
NOMINAL LOAD: [kg]	1000		
SPEED: [m/s]	1		
FREQUENCY: [Hz]	50		
TENSION: [V]	400V [Three-phase]		

Flat and levelled floor, protected against water leaking.

[EN81-20:2014 5.2.1.9]

Foresee pit access device

[EN81-20:2014 5.2.2.4]

Stop device

[EN81-20:2014 5.2.1.5.1. a]

Inspection control station.

[EN81-20:2014 5.2.1.5.1. b]

Power supply

[EN81-20:2014 5.2.1.5.1. c]

Light switch

commuted with the cabinet.

[EN81-20:2014 5.2.1.5.1. d]